

Strategic Plan Foundational Goal: Transportation Advocacy

Eric Johnson
Executive Director

Deirdre Wilson
Senior Planning Manager

Christine Wolf
Senior Planner



Online Survey Responses



Question:

What do you think will be the Port of Tacoma's most important role for Pierce County for the next five years?

- ✦ *"Transportation infrastructure investments and advocacy"*
- ✦ *"Improving transportation in/out of port"*
- ✦ *"Improve rail infrastructure to entice shipping lines to call at the port"*
- ✦ *"Get involved in aerial mobility advancements"*
- ✦ *"Complete the connection from 167 to I-5 to enable a smooth flow of traffic"*
- ✦ *"Shipping American products overseas"*
- ✦ *"Adaptation to the third industrial revolution with communications, logistics and energy"*

Agenda



- Transportation Planning (2011 to today)
- Transportation Decision Lifecycle
- Strategic Plan Transportation Goal
- Transportation Advocacy Strategies

Transportation Planning

Transportation Planning Plans and Studies



Tideflats Area Transportation Study	2011
Land Use and Transportation Plan	2014
Tideflats Intelligent Transportation System (ITS) Strategic Plan	2015
Tideflats Emergency Response Plan	2016
10-Year Road and Rail Plan	2017
11 th Street Bridge Corridor Study	2019
Tideflats Subarea Plan	Pending

Go to the Port's Planning page to access these Plans and Studies

<https://www.portoftacoma.com/planning>

Transportation Planning Strategic Conclusions



1. Over the past ten years, the Port has carried out several planning efforts jointly with partner agencies.
2. While the Port doesn't own transportation rights of way, we can influence planning and project delivery.
3. Progress has been made. Yet: There is a lack of funding for physical infrastructure projects.
4. There is no formal process to jointly monitor progress towards planning goals and assess the need for plan adjustments.
5. There are two priority regional roadway projects:
 - SR 167
 - Interstate 5 and Port of Tacoma Road Interchange.

Transportation Planning

Tideflats Area Transportation Study (2011)



Study Goals

- Evaluate the multimodal transportation network in, and surrounding, the Tideflats
- Identify and prioritize projects to maintain and improve access to the Tideflats

Strategic Conclusions

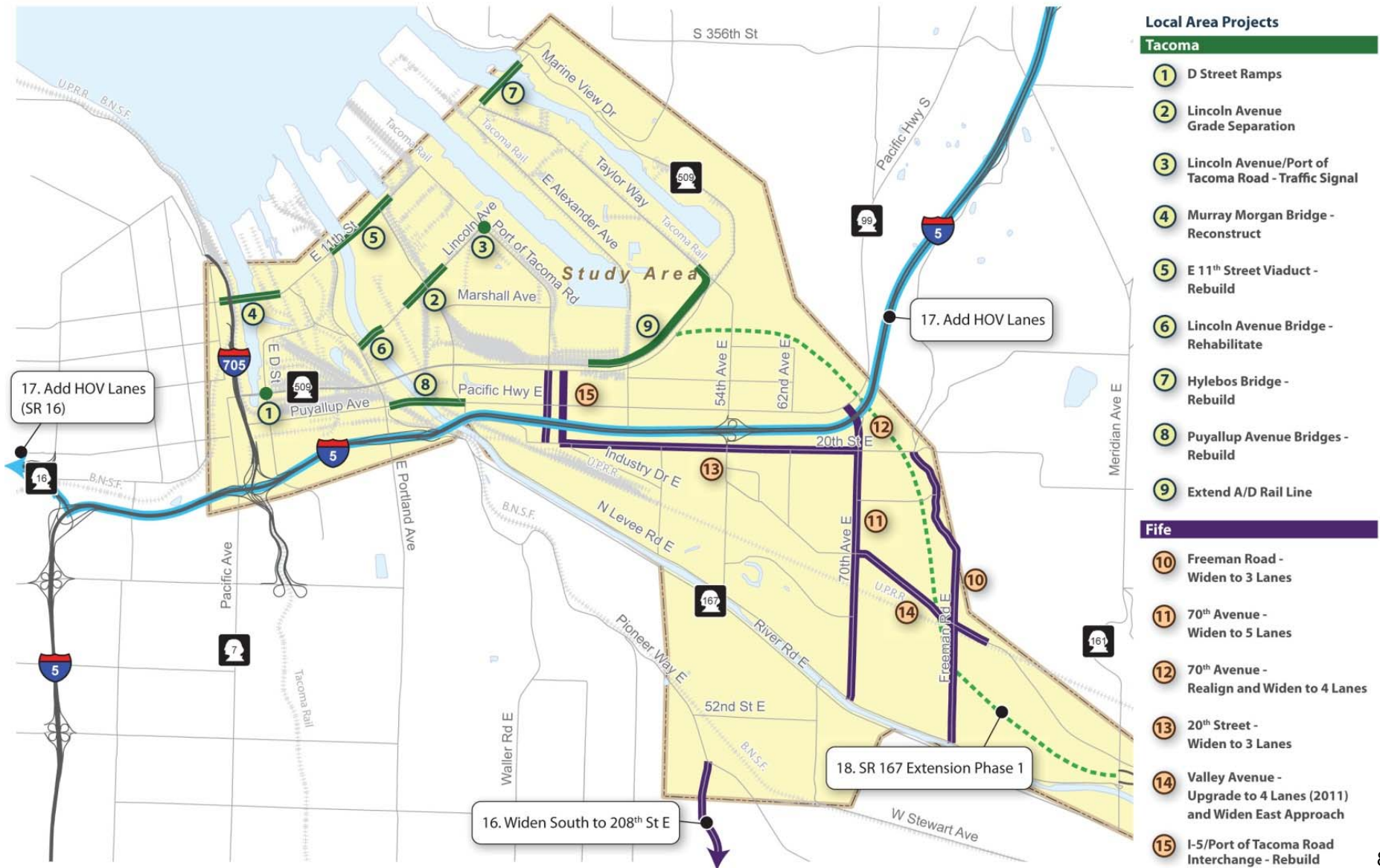
- Transportation needs are complex due to a diversity of uses
- Baseline projects are essential to avoid transportation system failure by 2030

Partners

Port of Tacoma, Washington State Department of Transportation, Freight Mobility Strategic Investment Board, City of Fife, City of Tacoma, Marine View Ventures (an entity of the Puyallup Tribe of Indians), Pierce County, SSA Marine

Transportation Planning

Tideflats Area Transportation Study Baseline Projects



Transportation Planning Land Use & Transportation Plan (2014)



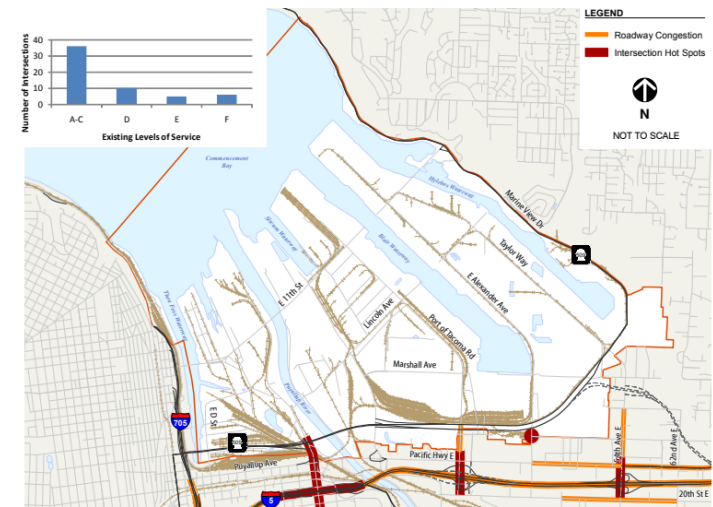
Plan Goals

- Guide future development and infrastructure priorities to achieve the goals set forth in the 2012 Strategic Plan
- Prioritize freight system improvement strategies and investments for:
 - Regional and Port Access
 - Tideflats Circulation and Preservation
 - Rail Facilities
 - Waterways

Strategic Conclusions

- Priority regional projects are SR 167 and the Port of Tacoma Road Interchange
- Need for other access projects as well as rail facility improvements

Prepared for
Port of Tacoma



Transportation Planning Tideflats Intelligent Transportation Systems (ITS) Strategic Plan (2015)



Plan Goals

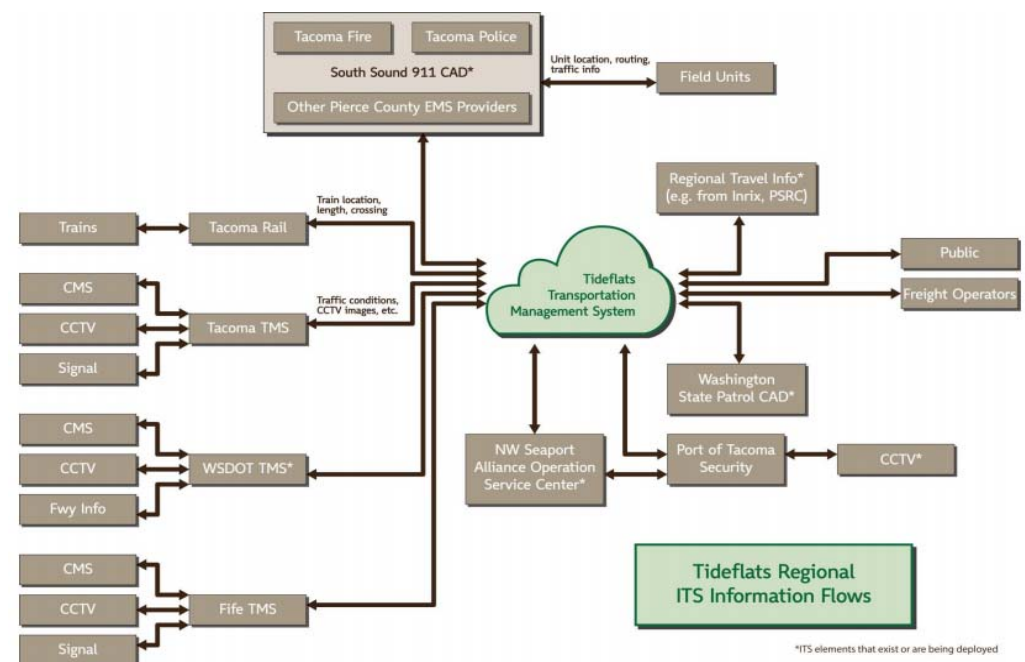
- Identify needs and strategies to improve safety, increase freight mobility and accommodate growth
- Provide a joint framework to meet that demand by the most economic and efficient means possible

Strategic Conclusion

Implementation of the ITS Strategic Plan will require the coordination and integration of partner agencies in the Tideflats area

Partners

Port of Tacoma and City of Tacoma



Transportation Planning Tideflats Emergency Response Plan (2016)



Goals

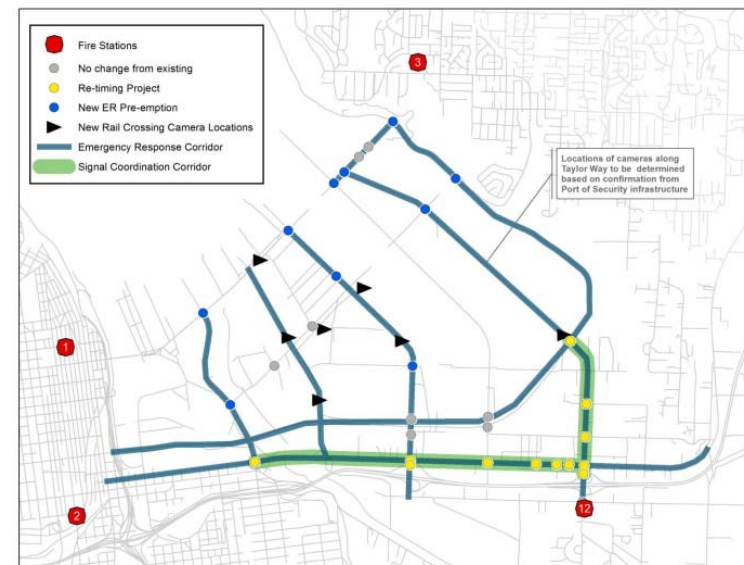
- Assess current and likely future fire and Emergency Medical Services (EMS) capability into and out of the Tideflats
- Determine the current and anticipated impact of rail and traffic congestion through 2035
- Identify long-term locations from which to base emergency response
- Prioritize improvements that preserve or improve emergency response capability and emergency evacuation

Strategic Conclusion

If planned roadway projects are implemented, response times are ***not*** significantly affected until 2035

Partners

Port of Tacoma and City of Tacoma



Transportation Planning 10-year Road and Rail Plan (2017)



Plan Goals

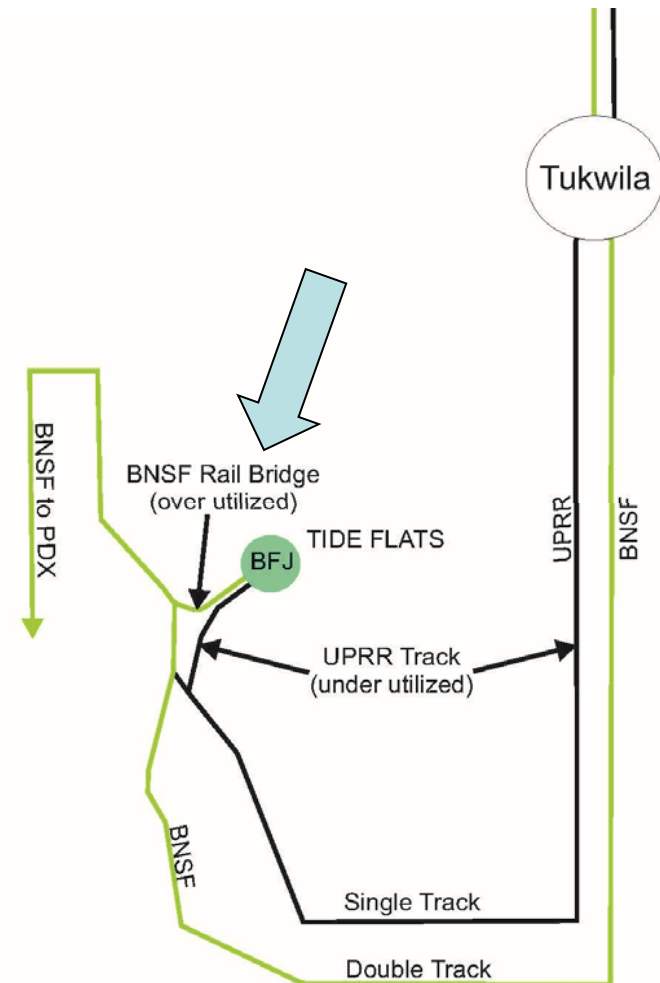
- Identify off-terminal infrastructure needs to support the container business, and priority projects addressing these needs
- Provide high-level project cost estimates

Strategic Conclusions

- The priority regional road project for Tacoma is Puget Sound Gateway (SR 167 / SR 509)
- Mainline rail access priority projects for Tacoma include a 2nd Burlington Northern Santa Fe (BNSF) bridge across the Puyallup River

Prepared by

Northwest Seaport Alliance (NWSA) staff



Transportation Planning

10-year Road & Rail Plan: Roadway Projects



Project Name	Project Need	Project Type				
		Gate	Intersection	ITS Application	Bridge or Grade Separation	Pavement
Port of Tacoma Road/I-5 Interchange	 		✓	✓	✓	✓
Tideflats ITS Program	  	✓		✓		
Taylor Way Heavy Haul	  		✓	✓		✓
GCPT Access	 	✓	✓	✓	✓	
SR 167 Extension	 	✓		✓	✓	
Remaining Puyallup Ave Bridge Sections	 		✓	✓	✓	
SR 509/Taylor Way/54th Ave East	 		✓			
<i>Lincoln Ave Corridor/Puyallup River Capacity Improvement</i>	 		✓	✓	✓	



Terminal Access



Harbor Mobility



Freeway Connection

Transportation Planning

11th Street Bridge Corridor Study (2019)



Study Goal

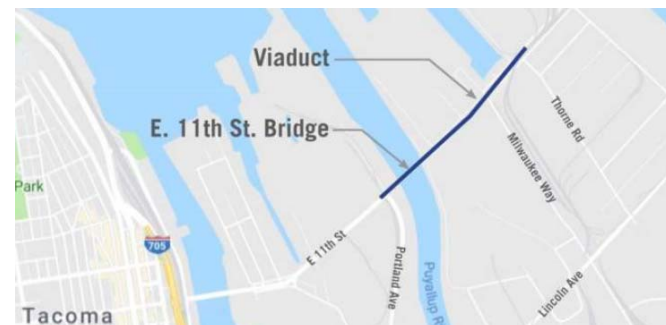
Provide information to determine, at a high level, whether the bridge and/or viaduct should be replaced, rehabilitated, or demolished without replacement.

Strategic Conclusions

- Demolition and replacement with a new three-lane structure with 40-foot high-rise under the new viaduct is the recommended solution
- This recommendation should be evaluated in more detail as part of the Tideflats Subarea Plan

Partners

City of Tacoma and Port of Tacoma



Transportation Planning

Tideflats Subarea Plan (pending)



Goals

- Establish a shared long-term vision, and a more coordinated approach to development, environmental review, and strategic capital investments
- Support prioritization of transportation projects and improve their competitiveness for grant funding

Strategic Conclusion

- Transportation is one part of a larger study with limited resources dedicated to that element. \$129,000 of the \$1.2 million plan budget is focused on transportation information needed to complete an Environmental Impact Statement (EIS), not to assess needs and priorities

Partners

City of Tacoma (\$500,000), Port of Tacoma (\$500,000), Puyallup Tribe of Indians (\$200,000), City of Fife, Pierce County

Transportation Planning Strategic Conclusions



1. Over the past ten years, the Port has carried out several planning efforts jointly with partner agencies.
2. While the Port doesn't own transportation rights of way, we can influence planning and project delivery.
3. Progress has been made. Yet: There is a lack of funding for physical infrastructure projects.
4. There is no formal process to jointly monitor progress towards planning goals and assess the need for plan adjustments.
5. There are two priority regional roadway projects:
 - SR 167
 - Interstate 5 and Port of Tacoma Road Interchange.

Transportation Decision Lifecycle

Stages

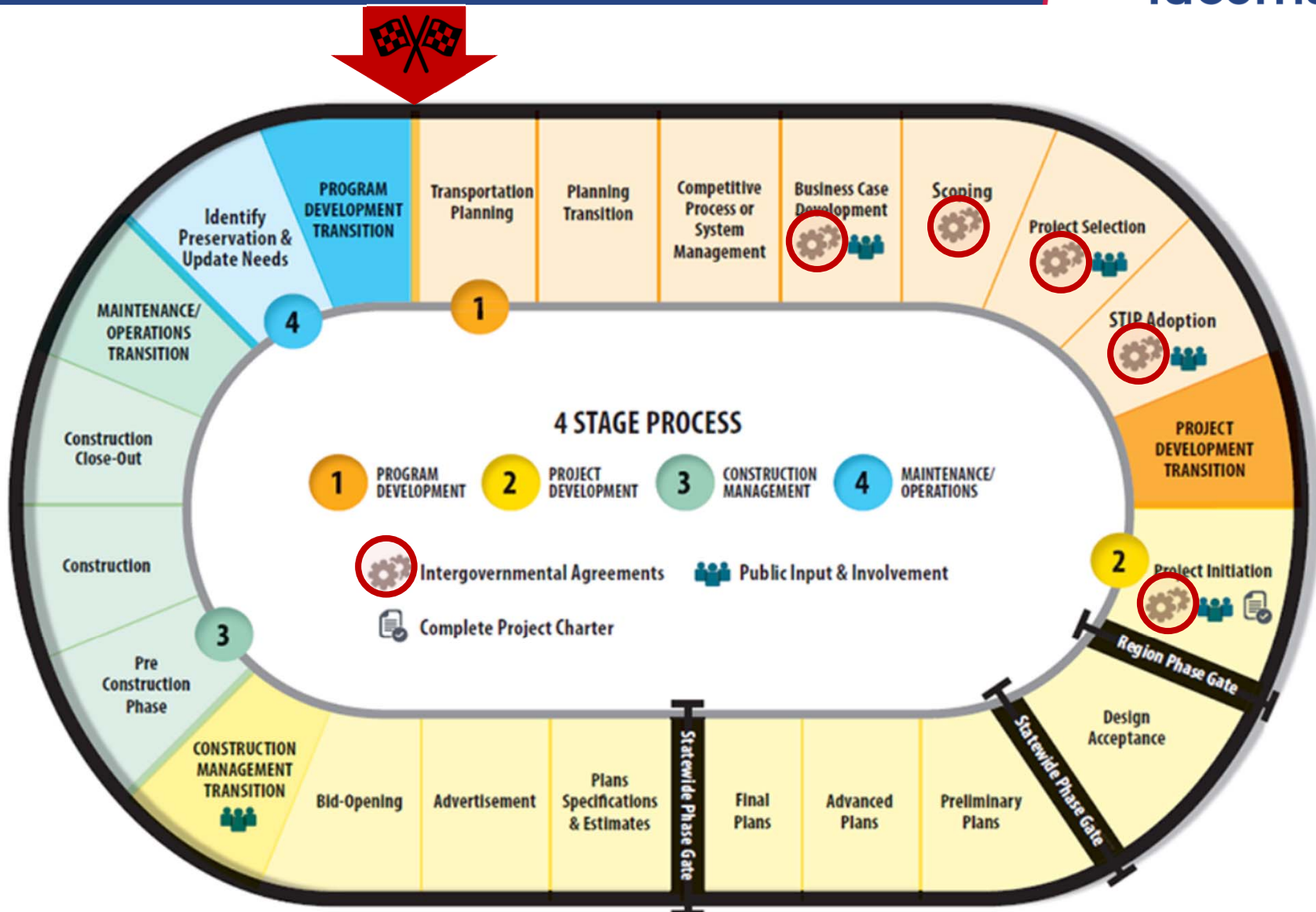
1. Plan Development
2. Project Development
3. Construction Management
4. Maintenance and Operations

Critical Elements

- Business Case Development
- Intergovernmental Agreements

A project lifecycle can range from two to thirty years.

Transportation Decision Lifecycle



Strategic Plan Foundational Goal

2012 (current)

Provide reliable & efficient regional & local infrastructure connections.

2021 (new)

Transportation Advocacy

Partner with lead agencies to support and advance transportation infrastructure vital to the maritime and regional economy.

Foundational Goal Advocacy Opportunities



Verbal support by the Commission

- Speaking engagements
- Board representations
- Legislative agenda and visits

Written support

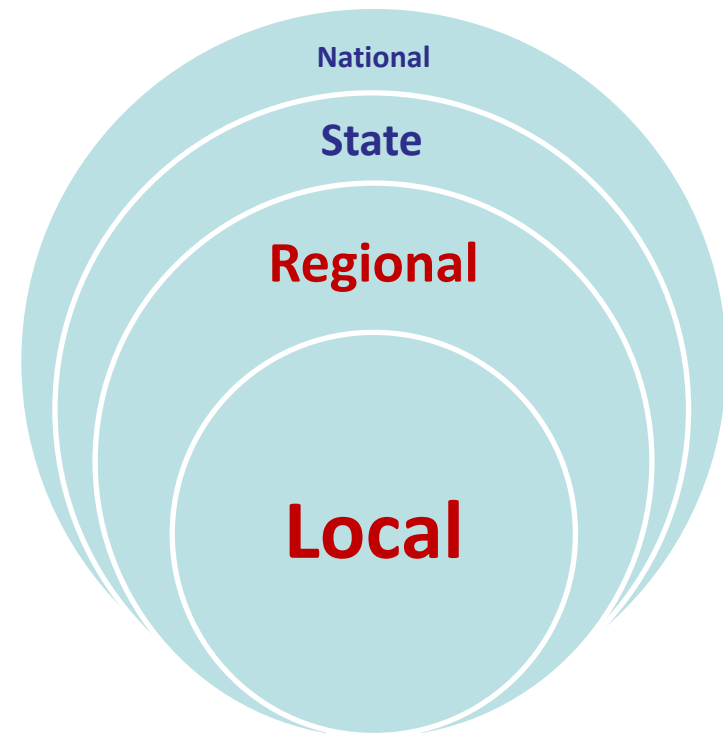
- Grant and other support letters

Staff resources

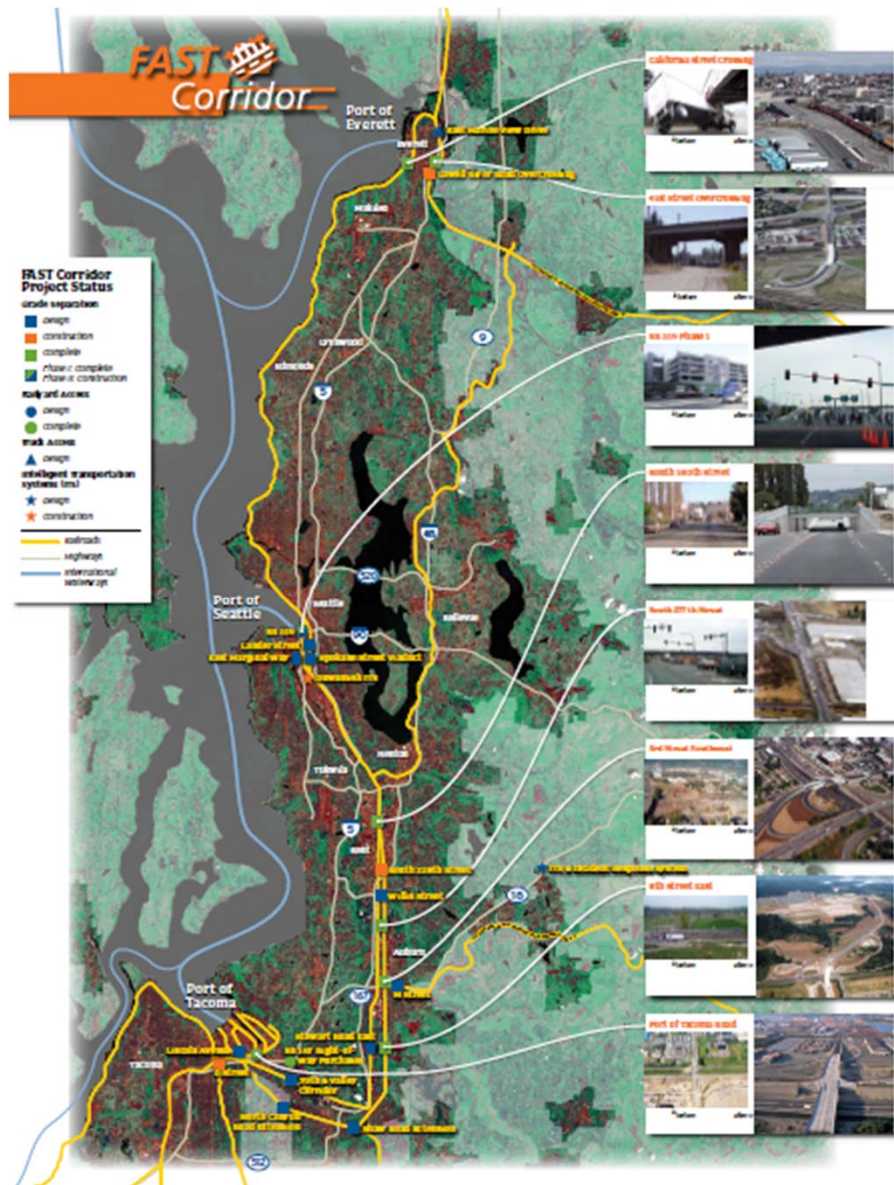
- Direct engagement in a plan, study, program or project
- Advocacy on a committee

Financial commitment

- Economic Development Fund
- Grant match
- Funding partnership



Foundational Goal Advocacy Success



The Freight Action Strategy for Seattle-Tacoma (FAST) Corridor established in 1998

Partner with lead agencies to support and advance transportation infrastructure vital to the maritime and regional economy.

Foundational Goal Key Performance Indicators (KPIs)



Partner with lead agencies to support and advance transportation infrastructure vital to the maritime and regional economy.

This is a **BIG, AUDACIOUS GOAL!**

Questions:

- What does success look like?
- What are the smaller goals that lend themselves to the development of Key Performance Indicators (KPIs) to track whether we are making progress towards this goal?

Transportation Advocacy Strategies

Provide reliable & efficient regional & local infrastructure connections.

Improve efficiency and cost competitiveness of the supply chain	<ul style="list-style-type: none">• Improve the efficiency of the Tideflats rail system• Facilitate development of strategic projects with the mainline railroads in collaboration with relevant federal and state government agencies, public ports and other stakeholders
Enhance public infrastructure	<ul style="list-style-type: none">• Provide regional leadership in securing the funds needed to complete SR 167• In partnership with affected parties, improve the condition and operation of Port of Tacoma Road to handle increased traffic volume
Improve the Port's infrastructure	<ul style="list-style-type: none">• Develop a long-range Port land use and transportation plan to support the Port's future business growth• Design and develop appropriate rail support infrastructure in advance of Tideflats rail growth

Transportation Action Strategies

2014 Land Use and Transportation Plan



Regional and Port access	<ul style="list-style-type: none">• Provide regional leadership in securing the funds needed to complete SR 167• Support the City of Fife in its efforts to secure funding for the Port of Tacoma Road/Interstate 5 interchange• Ensure that Portland Avenue from SR 509 to Lincoln Avenue is preserved and maintained for freight
Tideflats preservation and circulation	<ul style="list-style-type: none">• Prioritize rights-of-way for preservation, maintenance and improvements<ul style="list-style-type: none">• Port of Tacoma Road• Portland Avenue• Thorne Road—Heavy haul Improvements• Work with the City of Tacoma to establish a pavement condition index and other benchmarks for maintenance and preservation for Tideflats area roadways and potential area-wide funding strategies• Develop and implement Intelligent Transportation Systems (ITS) improvements

Transportation Action Strategies

2014 Land Use and Transportation Plan



Rail facilities	<ul style="list-style-type: none">• Support Tacoma Rail in renewing infrastructure periodically to support current and attract new freight rail customers• Install new system capacity and/or features within the existing right-of-way designed to improve operational flexibility and efficiency• Collaborate with the Puyallup Tribe of Indians to develop rail infrastructure on the Blair-Hylebos Peninsula• Support improvements by others, as appropriate
Waterways	<ul style="list-style-type: none">• Expand/maintain navigable waterways to support terminals and increasing vessel size• Modernize wharves• Protect and improve environmental quality of waterways• Promote safe navigation

Transportation Advocacy Decision Process



Transportation Advocacy DRAFT Strategies



Foundational Goal:

Partner with lead agencies to support and advance transportation infrastructure vital to the maritime and regional economy.

TA-1

Develop criteria and policies to guide decision-making for Port transportation advocacy efforts, and prioritization of infrastructure investments.

TA-2

Develop a long-range understanding of regional transportation projects that support port-related mobility.

TA-3

Advocate for the transportation infrastructure and system management needs of port-related businesses in the Tideflats and Pierce County.

TA-4

Support completion of the Port of Tacoma Road and Interstate 5 interchange improvements and the SR 167 Gateway Project.

TA-1 Develop criteria and policies to guide decision-making for Port transportation advocacy efforts, and prioritization of infrastructure investments.

WHY

- Current advocacy and project prioritization efforts do not always follow a structured decision-making process that can measure progress toward goals
- This makes it difficult to make resource allocation decisions

HOW

- Set up a Commission committee leading the effort
- Identify members and leadership of a matrixed staff team supporting the development effort
- Allocate additional resources as needed

TA-1

Develop criteria and policies to guide decision-making for Port transportation advocacy efforts, and prioritization of infrastructure investments.

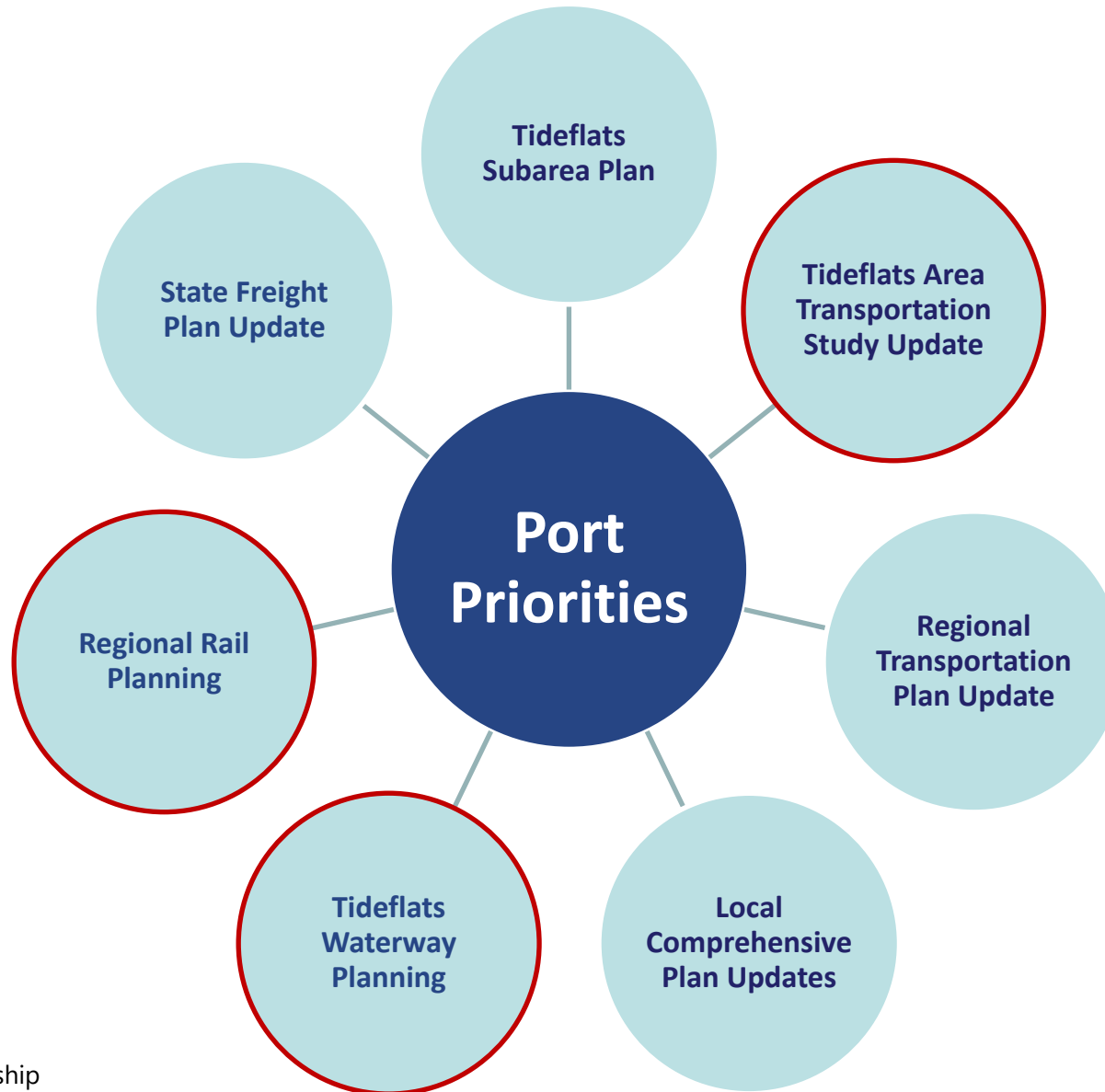
TA-2 Develop a long-range understanding of regional transportation projects that support port-related mobility.

WHY

- The transportation system is a network of interrelated transportation facilities for all modes, individual projects must be coordinated to improve the system as a whole
- It often takes many years for a project to move from an identified need to implementation

HOW

- Work with partner agencies to coordinate long-range planning efforts for all modes
- Fold the results into the policies and guidelines developed under TA-1



TA-2

Develop a long-range understanding of regional transportation projects that support port-related mobility.

TA-3 Advocate for the transportation infrastructure needs of port-related industries in the Tideflats and Pierce County.

WHY

- Supports the Port's economic and job growth goals
- Ports are among few public entities prioritizing freight mobility
- With emerging focus on active transportation and transit it is important to protect and enhance freight corridors
- Transportation system improvements support the NWSA and other port-related businesses and industries
- The NWSA is the largest income generator for the Port

HOW

- Direct staff engagement
- Commissioner and staff verbal advocacy
- Grant and other letters of support
- Funding partnerships
- Grant match

City of Tacoma 2021 State Legislative Priorities

- On-time delivery of key regional investments
(Tacoma Dome Link Extension, **Puget Sound Gateway**)
- Funding and/or enhanced local option tools for cities to meet **local street maintenance** needs
- \$9 million state match for the **Puyallup Avenue** Complete Streets Project
- Funding for **HOV lanes on Interstate 5** from 38th to Joint Base Lewis-McChord
- \$650,000 for Phase 2 of a study to improve access to the Tacoma Mall subarea from Interstate 5
- Prioritization of trail investments (SR 167 Tacoma-Puyallup Trail, Prairie Line Trail, and Schuster Parkway Promenade)

Transportation Advocacy Opportunities



2020 Port Economic Development Grant Examples

[City of Puyallup](#)
\$25,000

Meridian Avenue Restoration Project, including the analysis of safety and visibility improvements around the freight rail connection where Meridian and the Central Business District intersect.



[City of Sumner](#)
\$50,000

Stewart Road Bridge Replacement: A project to replace the existing two-lane Stewart Road Bridge with a four-lane bridge, including a shared-use path and sidewalk.



[City of Sumner](#)
\$25,000

166th Avenue E reconfiguration project: Working with WSDOT, the City of Sumner will make significant improvements to the interchange of the Sumner-Tapps Highway (166th Ave. E) and SR 162. The port's support will assist in the final design for this project to be prepared for construction.



SR-167 Interlocal Agreement

Construction Stage	ILA Deadline	ILAs Needed
SR 167 Stage 1a	End of 2018	<ul style="list-style-type: none"> • Fife Interurban ✓ • Port of Tacoma ✓ • Tacoma ✓
SR 509 Stage 1b	End of 2019	<ul style="list-style-type: none"> • Des Moines ✓ • Kent ✓ • King County ✓ • Port of Seattle ✓ • SeaTac ✓
SR 167 Stage 1b	End of 2020	<ul style="list-style-type: none"> • Edgewood (in process) • Fife ✓ • Port of Tacoma (in process) • Tacoma ✓
SR 509 Stage 2	End of 2022	<ul style="list-style-type: none"> • SeaTac • Port of Seattle
SR 167 Stage 2	End of 2022	<ul style="list-style-type: none"> • Pierce County • Puyallup • Sumner

TA-3

Advocate for the transportation infrastructure needs of port-related industries in the Tideflats and Pierce County.

TA-4 Support completion of the Interstate-5 and Port of Tacoma Road interchange improvements and the State Route 167 Gateway Project.

WHY

- Strong analytical evidence that these projects support the Port's economic growth and job creation mission
- Priority projects identified in several recent study and plan strategic conclusions
- The Port has previously provided strong advocacy and financial support

HOW

- Direct staff project engagement
- Commissioner and staff verbal advocacy
- Grant letters of support
- Funding

TA-4

Support completion of the Interstate 5 and Port of Tacoma Road interchange improvements and the SR 167 Gateway Project.

Transportation Advocacy Strategic Plan 2021-2026



Foundational Goal:

Partner with lead agencies to support and advance transportation infrastructure vital to the maritime and regional economy.

TA-1

Develop criteria and policies to guide decision-making for Port transportation advocacy efforts, and prioritization of infrastructure investments.

TA-2

Develop a long-range understanding of regional transportation projects that support port-related mobility.

TA-3

Advocate for the transportation infrastructure and system management needs of port-related businesses in the Tideflats and Pierce County.

TA-4

Support completion of the Port of Tacoma Road and Interstate 5 interchange improvements and the SR 167 Gateway Project.



NEXT STEPS

Nov 5 – Environmental Stewardship

Nov 19 – Organization Health

Dec 3 – Economic Vitality

Dec 17 – Community Connections

